

Staveley and Copgrove P C

Play Area Inspection



Inspected by Park Lane Playgrounds



1st September 2017 at 3.00pm



Unit: Wicksteed Whirly Bird
Year of Manufacture: 2000
Overall Condition: Good
Comments: Moss and weeds on safety surface
Wet pour surface showing signs of wear

(See Appendix A)
Surfacing: Wetpour



Unit: Record Cradle Swings
Year of Manufacture: Unknown
Overall Condition: Good
Comments: Moss on the seats and surface

(See Appendix A)
Surfacing: Wetpour
Crack in the wetpour, repair to prevent any further deterioration.



Unit: Record Flat Seat Swings
Year of Manufacture: Unknown
Overall Condition: Good
Comments: Moss and debris on the safety surface

(See Appendix A)
Surfacing: Wetpour



Unit: Hags Multi Pondo
Year of Manufacture: 2000
Overall Condition: Good
Comments: Moss on the safety surface

Surfacing: Wetpour



Unit: Play and Leisure Multi Unit
Year of Manufacture: 2000
Overall Condition: Good
Comments: Chains showing signs of wear



Moss and weeds on the area
(See Appendix A)

Surfacing: Wetpour



Unit: Play and Leisure Fish Spring Mobile
Year of Manufacture: 2006
Overall Condition: Good
Comments: Moss on the safety surface

Surfacing: Wetpour



Unit: Ledon Car Spring Mobile
Year of Manufacture: 2002
Overall Condition: Good
Comments: Moss on safety surface,
Replace the clamp
(See Appendix A)

Surfacing: Wetpour



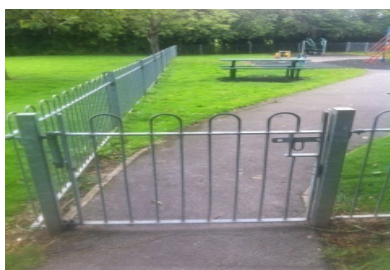
Unit: Bench
Year of Manufacture: Unknown
Overall Condition: Good
Comments:

Surfacing: Rubber Grassmat



Unit: Goalposts
Year of Manufacture: Unknown
Overall Condition: Average
Comments: Both goals slightly loose in ground-monitor
until next inspection
Moles hills on the area
(See Appendix A)

Surfacing: Grass



Unit: Fencing and Gates
Year of Manufacture: Unknown
Overall condition: Average
Comments: Drop Pin Missing on Vehicle Access Gate
1 no post loose in ground, moss on fence
and pedestrian gate.
The bottom crook is coming out on

the timber gate, 1 gate not closing
gate
(See Appendix A)

Appendix A

Whirley bird



Comments:

Wet pour showing signs of wear

Recommendations:

Monitor the wet pour until the next inspection



Comments:

Weeds and moss on the surface

Recommendations:

Remove the moss and weeds

Cradle Swings



Comments:

Moss on the safety surface

Recommendations:

remove moss



Comments:

Moss on the seats

Recommendations:

Remove the moss so the swings can be used



Comments:

Crack in the wet pour

Recommendations:

Repair the crack to prevent further deterioration





Multi Unit



Comments:

Chains showing signs of wear

Recommendation:

Monitor chains until next inspection



Comments:

Moss and debris on the surface area

Recommendations:

Remove the moss and debris



Springers

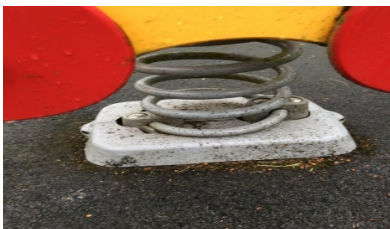


Comments:

Clamps showing signs of wear

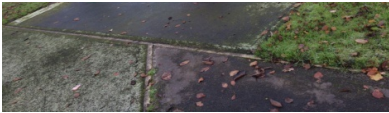
Recommendation:

Replace the clamps



Comments:

Moss on the surface



Recommendations:

Remove the moss

Fencing and Gates



Comments:

Drop pin missing on vehicular Access Gate

Recommendation:

Replace Drop pin



Comments:

1 no post loose in ground

Recommendation:

Secure loose post



Comments:

Moss on pedestrian gate and fencing

Recommendation:

Remove moss from fencing and gate



Comments:

Crook loose on the gate

Recommendations:

Secure the crook



Comments:

The gate is not closing

Recommendations:

Adjust the spring on the gate



Comments:

Mole hills on the area

Recommendations:

Remove the mole hills

***The foregoing report is a true representation of the play area at the time of inspection.
The Inspection was entirely visual and no equipment was dismantled.***