

Staveley and Copgrove P C

Play Area Inspection



Inspected by Park Lane Playgrounds



4th March 2019 at 12.20am



Unit: Wicksteed Whirly Bird
Year of Manufacture: 2000
Overall Condition: Good
Comments: Wet pour surface showing signs of wear

(See Appendix A)

Surfacing: Wetpour



Unit: Record Cradle Swings
Year of Manufacture: Unknown
Overall Condition: Good
Comments: Grease the unit

Surfacing: Wetpour



Unit: Record Flat Seat Swings
Year of Manufacture: Unknown
Overall Condition: Good
Comments:

Surfacing: Wetpour



Unit: Hags Multi Pondo
Year of Manufacture: 2000
Overall Condition: Good
Comments: 2no footrests missing



Surfacing: (See Appendix A)
Wetpour



Unit: Play and Leisure Multi Unit
Year of Manufacture: 2000
Overall Condition: Good
Comments: Chains showing signs of wear

Surfacing: (See Appendix A)
Wetpour



Unit: Play and Leisure Fish Spring Mobile
Year of Manufacture: 2006
Overall Condition: Good
Comments:

Surfacing: Wetpour

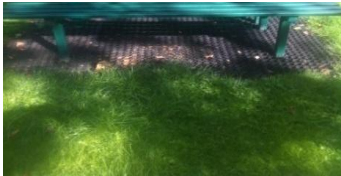


Unit: Ledon Car Spring Mobile
Year of Manufacture: 2002
Overall Condition: Good
Comments:

Surfacing: Wetpour



Unit: Bench
Year of Manufacture: Unknown
Overall Condition: Good



Comments:

Surfacing: Rubber Grassmat



Unit: Goalposts

Year of Manufacture: Unknown

Overall Condition: Average

Comments: Moles hills and traps on the area
Grass requires cutting

(See Appendix A)

Surfacing: Grass



Unit: Fencing and Gates

Year of Manufacture: Unknown

Overall condition: Average

Comments: Drop Pin Missing on Vehicle Access Gate
No padlock on the vehicle access gate

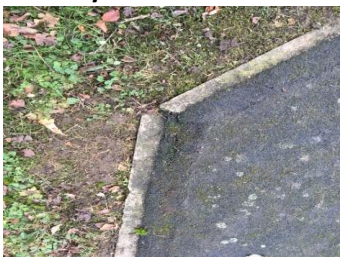
(See Appendix A)

The foregoing report is a true representation of the play area at the time of inspection.

The Inspection was entirely visual and no equipment was dismantled.

Appendix A

Whirley bird



Comments:

Wet pour showing signs of wear

Recommendations:

Monitor the wet pour until the next inspection

Multi pondo



Comments:

Both footrest missing

Recommendations:

Replace the rubber

Multi Unit



Comments:

Chains showing signs of wear

Recommendation:

Monitor chains until next inspection

Area



Comments:

Debris on the area

Recommendations:

Remove all debris

Fencing and Gates



Comments:

Drop pin missing on vehicular Access Gate

No Padlock

Recommendation:

Replace Drop pin

Replace the padlock



Comments:

Mole hills on the area



Recommendations:
Remove the mole hills



Comments:
Mole traps on the area

Sign



Comments:
Damage to the sign

Recommendations:
Monitor the sign
until the next inspection



Comments:
Debris on the path

Recommendations:
Remove the debris to eliminate slippery
surface