

Staveley and Copgrove P C

Play Area Inspection



Inspected by Park Lane Playgrounds



4th March 2020 at 9.30am



Unit:

Wicksteed Whirly Bird



Year of Manufacture: 2000
Overall Condition: Good
Comments: Wet pour surface showing signs of wear

Surfacing: (See Appendix A)
Wetpour



Unit: Record Cradle Swings
Year of Manufacture: Unknown
Overall Condition: Good
Comments: Grease the unit
Chains showing signs of wear
debris on the area
wetpour surface has sunk

Surfacing: (See Appendix A)
Wetpour



Unit: Record Flat Seat Swings
Year of Manufacture: Unknown
Overall Condition: Good
Comments: Chains wearing monitor this until the next inspection
Debris and mole hills

Surfacing: (See Appendix A)
Wetpour



Unit: Hags Multi Pondo
Year of Manufacture: 2000
Overall Condition: Good
Comments: 2no footrests missing

Surfacing: (See Appendix A)
Wetpour



Unit: Play and Leisure Multi Unit
Year of Manufacture: 2000
Overall Condition: Good
Comments: Chains showing signs of wear



Weeds and debris on the area

Surfacing:

(See Appendix A)

Wetpour



Unit: Play and Leisure Fish Spring Mobile

Year of Manufacture: 2006

Overall Condition: Good

Comments:

Surfacing:

Wetpour



Unit: Ledon Car Spring Mobile

Year of Manufacture: 2002

Overall Condition: Good

Comments:

Surfacing:

Wetpour



Unit: Bench

Year of Manufacture: Unknown

Overall Condition: Good

Comments:

Surfacing:

Rubber Grassmat



Unit: Goalposts

Year of Manufacture: Unknown

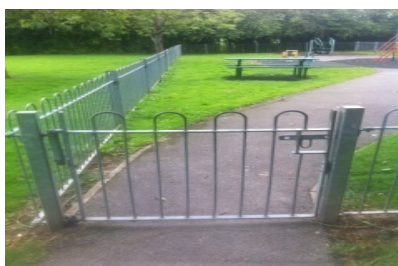
Overall Condition: Average

Comments: Mole hills on the field

Sufacing:

(See Appendix A)

Grass



Unit: Fencing and Gates

Year of Manufacture: Unknown

Overall condition: Average

Comments: Drop Pin Missing on Vehicle Access Gate

No padlock on the vehicle access gate

Road side gate posts are rotten

(See Appendix A)

*The foregoing report is a true representation of the play area at the time of inspection.
The inspection was entirely visual and no equipment was dismantled.*

Appendix A

Whirley bird



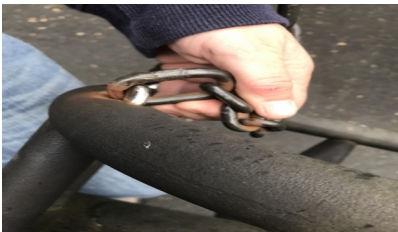
Comments:

Wet pour showing signs of wear

Recommendations:

Monitor the wet pour until the next inspection

Cradle seats



Comments:

Chains showing signs of wear

Recommendations:

monitor the chain until the next
Inspection



Comments:

Grass encroaching on to the wet pour
surface

Recommendations:

Remove the grass and debris to
prolong the life of the surface



Comments:

Wetpour surface has sunk

Recommendations:

Monitor the wetpour surface until
the next inspection

Flat seat swings



Comments:

Slight wear on the chains

Recommendations:

Monitor the chains until
the next inspection



Comments:
Grass encroaching and mole hills on the surface

Recommendations:
Remove the grass and mole hills to prolong the life of the surface

Multi pondo



Comments:
Both footrest missing

Recommendations:
Replace the rubber

Multi Unit



Comments:
Chains showing signs of wear

Recommendation:
Monitor chains until next inspection



Comments:
Weeds and debris on the area

Recommendations:
Remove the debris and weeds



Area



Comments:
Debris on the area



Recommendations:

Remove all debris

Fencing and Gates



Comments:

Drop pin missing on vehicular Access Gate
No Padlock

Recommendation:

Replace Drop pin
Replace the padlock

Road side gate and Bin



Comments:

Fence rail not secure, protruding nail

Recommendations:

Secure the fence rail, remove old nail



Comments:

Bin is not secure

Recommendations:

Secure the bin



Comments:

Very sharp edges on the pig netting

Recommendations:

We would recommend using chain link fencing

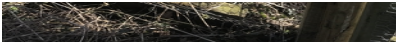


Comments:

Broken rail

Recommendations:

Replace the rail or remove from site



Bin Leading to the park



Comments:

The bin is not secure

Recommendations:

Secure the bin



Comments:

Mole hills on the football pitch

Recommendations:

Remove the mole hills as they are a trip hazard

The play area has moss on the wetpour surfaces and the tarmac paths I would suggest suggest you wait for the better weather and treat the area